

NRA RODEO  
**NEWS**

Official Publication of Northern Rodeo Association

JUNE 1988



PHOTO BY JEANNIE CARPENTER

SPRING N.I.R.A RODEO ACTION  
HARDIN — 1988



# NRA OFFICERS AND DIRECTORS

## PRESIDENT

Glen Hough  
Rte. 1, Homer Davis Rd.  
Shepherd, Mont. 59079  
406-373-5986

## VICE-PRESIDENT

Butch Bratsky  
3711 Hayden Drive  
Billings, Mont. 59102  
406-652-4950

## SECRETARY

Jann Johnson  
P.O. Box 1122  
Billings, Mont. 59103  
406-252-1122

## DIRECTOR AT LARGE

Ed Waldhauser  
112 Alexander Rd.  
Billings, Mont. 59101  
406-259-4833

## STEER WRESTLING

Nick Econom  
Winifred, Mont. 59487  
406-462-5621  
(E) Bill Davis  
1170 Alaska Road  
Belgrade, Mont. 59714  
406-388-6345  
(W) Tom Holland  
1125 Cattle Drive  
Dillon, Mont. 59725  
406-683-2263

## STOCK CONTRACTOR

Dale Small  
Pompeys Pillar, Mont. 59064  
406-967-2852  
(W) Don Jacobs  
Box 2132  
Great Falls, Mont. 59403  
406-761-2721

## BULL RIDING

Jim Bushnell  
P.O. Box 6266  
Helena, Mont. 59604

## BREAKAWAY ROPING

Mary Melaney  
Wolf Creek, Mont. 59648  
406-235-4384

## SADDLE BRONC RIDING

Wayne Kelly  
Box 182  
Stanford, Mont. 59479  
406-566-2954  
(W) Butch Reynolds  
550 Tueker  
Corvallis, Mont. 59828  
(E) Cleo Boyce  
Winifred, Mont. 59489

## BAREBACK RIDING

Scott Schall  
Box 197  
Arlee, Mont. 59821  
406-726-3389  
(E) Bruce Martin  
Box 4260 GER  
Lewistown, Mont. 59457  
(W) Lane Yeager  
Box 1200  
Choteau, Mont. 59422  
Phone 406-466-2955

## TEAM ROPING

Bill Lynn  
3310 Duck Club Road  
Billings, Mont. 59105  
406-373-6218  
(E) Jack Kingsbury  
Coffee Creek, Mont. 59424  
(W) Mike Barthelmess  
Box 282  
Lincoln, Mont. 59639  
406-362-4664

## CALF ROPING

Lyle Baumann  
P.O. Box 327  
Hardin, Mont. 59034

## JUNIOR EVENTS

Nancy Peterson  
Box 28  
Three Forks, Mont. 59752  
406-285-3459  
(E) Gary Wilhelm  
White Siph. Sprgs. 59645  
(W) Patty Holland  
1125 Cattle Dr.  
Dillon, Mont. 59725  
406-683-2263

## COMMITTEE

### EAST

Bill Chiesa  
P.O. Box 1302  
Billings, Mont. 59103  
406-256-2400  
Dr. Howard Holloway  
Hartlowton, Mont. 59036  
406-632-4371  
Danny Halvorson  
Box 34  
Greycliff, Mont. 59033  
406-932-6599

### WEST

Janet Endecott  
Box 104  
McAllister, Mont. 59740  
406-682-4410  
Bob Gravely  
Route 1, Box 99  
Townsend, Mont. 59644  
406-266-5604  
Rodger Nordahl  
3184 Howard Road  
Helena, Mont. 59601  
406-227-6677

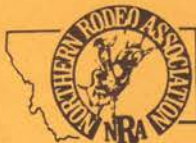
## MEDICAL DIRECTOR

Dr. John Halseth  
1400 - 29th St. South  
Great Falls, Mont. 59405

## ADVISORY BOARD

Lois Hill  
Box 108  
Geyser, Mont. 59447  
406-735-4484  
Ed Miller  
Absarokee, Mont. 59001  
406-328-4126  
Bob Schall  
Route 1 Box 4372  
Arlee, Mont. 59821  
406-726-3601

**NRA RODEO  
NEWS**



**Editors: Tootie and Stan Rasmussen  
P.O. Box 800, Choteau, Mont. 59422**

**HOME PHONE — 466-2091  
STAN'S OFFICE — 466-5772  
TOOTIE'S OFFICE — 466-2403**

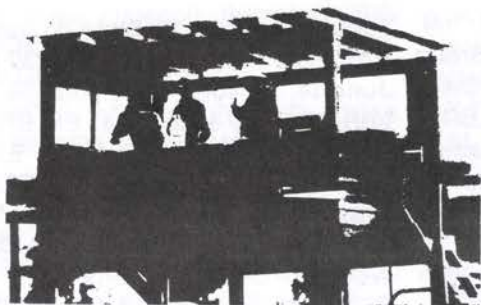
## ADVERTISING RATES

**Classified, 10¢ Per word, \$1.50 Minimum  
Full Page — \$50  
Half Page — \$30  
Quarter Page — \$17  
SUBSCRIPTION RATE \$6.50 PER YEAR  
INSIDE U.S.A.  
OUTSIDE U.S.A. — \$12.00**

Published by

**CHOTEAU ACANTHA  
CHOTEAU, MONTANA**

## From the Crow's Nest



Everyone in Jordan, Montana knows Colin Murnion or they are related to him, and everyone who knows him likes him.

It made the recent article in PRCA's "Rodeo Sports News" about him even more pleasing, since it praised his virtues while painting a colorful portrait of the fine young man.

However, it appears as if the Professional Rodeo Cowboys Association views the world through rose colored glasses and maybe blinders. The article said Murnion got a late start in rodeo, but was making up for it now.

Would you call earning \$10,000 to \$11,000 a year in rodeo slow?

That's what Murnion did in the Northern Rodeo Association in the nine years he finished in the top 10 or 15 in the final standings of the bull riding and bareback riding.

The generally known attitude of the PRCA of overlooking the thousands of regional rodeo associations across the United States, or pretending that they don't even exist, is a thorn in the sides of the officers and competitors of those associations.

These regional rodeo associations "feed" the PRCA with the talent it enjoys today, while the PRCA brands these regional associations "Ammie," or "amateurs," using a somewhat deriding connotation in the use of the word.

The word "amateur" is derived from the Latin word "amo" which means "love."

The membership of the Northern Rodeo Association is comprised of ranchers, teachers, doctors, lawyers, clerical workers, professional people, loggers, blue collar workers, etc. — people who work during the week and rodeo close to home on the weekends for the mere "love" of the sport.

The more ambitious, or talented, of these members who desire to achieve the ultimate, hit the PRCA trail and work for that trip to the ever-prestigious NFR, and a world title.

Rodeo is rodeo, no matter what the alphabet that is tacked on to it. Rodeo people are the most cheerful, optimistic people in the world, taking a beating in the arena, and then smiling and brushing themselves off, ready to do it over again.

Hopefully, one of these days the PRCA will recognize the part regional rodeo associations, such as the NRA, play

in building the ranks of the PRCA.

Congratulations to Colin Murnion on his great success in the PRCA. He's one of our boys!

Some very thought provoking ideas appeared in the last newsletter — ideas that could have evoked a multitude of letters to the editor or phone calls. Perhaps no one reads the newsletter, because our mailbox hasn't contained one comment. For all we know no one even got the newsletter.

Does anybody care?

The College National Finals Rodeo is scheduled for June 13 - 18 in Bozeman. Please support it, for rumor has it that Las Vegas is seeking that rodeo as well as the NFR.

Also, support the members of the Montana High School Rodeo Association as they compete in their State Finals in Lewistown June 24, 25, and 26.

**THE JUNE NEWSLETTER IS THE LAST YOU WILL RECEIVE ON YOUR 1987 MEMBERSHIP! PAY THOSE DUES NOW!**

Please help us welcome our friends from Australia who will be visiting with us during the month of July. Dick and Doreen Thompson were our congenial hosts in Orange, New South Wales when we visited Australia about a year ago, and they will arrive in the United States in time to celebrate our country's birthday with us.

Your Editors,  
Tootie and Stan Rasmussen

**Vita Stress**  
Balanced Vitamin - Mineral - Protein - Supplement

**For Horses**

Mike & Peggy Smith  
1190 Quinlan Road    Deer Lodge, MT 59722  
406-693-2433

14 lbs. - \$20.<sup>00</sup>      25 lbs. - \$30.<sup>00</sup>      50 lbs. - \$45.<sup>00</sup>



# 1988 APPROVED NRA RODEOS

## READING RODEO LISTINGS

BB - Bareback Riding; SB - Saddle Bronc Riding; BR - Bull Riding; SW - Steer Wrestling; CR - Calf Roping; LBR - Ladies Barrel Racing; LBAR - Ladies Breakaway Roping; TR - Team Roping; JBR - Junior Barrel Racing; JBAR - Junior Breakaway Roping.

All rodeos are Trade-Out rodeos unless otherwise indicated.

All rodeos accept permits unless otherwise indicated.

Enter all rodeos through Big Sky Rodeo Central Entry, 406-428-2205, unless otherwise indicated.

All rodeos impose a \$4 stock charge and a \$1 judges fee, except for junior events, unless otherwise indicated.

**POPLAR SADDLE CLUB RODEO, POP-LAR, MONT., JUNE 4, 5.** Performances at 5 p.m. on June 4, and 2 p.m. on June 5. Slack (if needed) at 9 a.m. on June 5. **EO MAY 30, 10 A.M. - 6:30 P.M. CB MAY 31, NOON - 6:30 P.M.** BB, SB @ \$500 w/\$40 EF. BR @ \$250 w/\$35 EF; SW, CR @ \$250 w/40 EF; LBR, LBAR @ \$150 w/\$40 EF. TR @ \$250 w/\$40 EF per man. Special Event: Calcutta Saddle Bronc Riders and 5% of total calcutta paid as a bonus to the first place SB rider. Stock Contractor: Northern Rodeo Co., Larry Wirtz. **BIG SKY CENTRAL ENTRY, 406-428-2205.**

**BROKEN HORN STAMPEDE, ABSAROKEE, MONT., JUNE 11, 12.** Performances at 6 p.m. on June 11 and 2 p.m. on June 12. Slack (if needed) at 9 a.m. on June 12. **EO MON., JUNE 6, 10 A.M. - 6:30 P.M. CB ON TUESDAY, JUNE 7, NOON - 6:30 P.M.** BB, SB, SW, CR, LBR, LBAR @ \$250 w/\$40 EF; BR @ \$250 w/\$35 EF; TR @ \$250 w/\$40 EF per man; JBR, JBAR @ \$100 w/\$10 EF. Stock Charge on JBAR. Small Rodeo Co. **BIG SKY RODEO CENTRAL ENTRY, 406-428-2205.**

**WILSALL RODEO ASSOCIATION RODEO, WILSALL, MONT., JUNE 18 & 19.** Performances at 6:30 on June 18 and

1:30 p.m. on June 19. Slack on June 18 at 2 p.m. **EO June 13, 10 a.m. - 6:30 p.m. CB June 14, 12 Noon - 6:30 p.m.** BB, SW, CR, LBR, LBAR @ \$100 w/\$35 EF; BR @ \$100 w/\$25 EF; SB @ \$150 w/\$35 EF; TR @ \$100 w/\$40 EF per man; JBR, JBAR @ \$25 w/\$10 EF. Special Event, Local Barrel Racing, \$3.00 EF. Small Rodeo Co. Myrtle Woosley, Secretary. **BIG SKY RODEO CENTRAL ENTRY, 406-428-2205.**  
*NO COMPANION PASSES.*

**UPPER YELLOWSTONE ROUNDUP ASSOCIATION RODEO, GARDINER, MONT., JUNE 25, 26.** Performances at 2 p.m. both days. **EO MONDAY, JUNE 20, 10 a.m. - 6:30 P.M. CB TUESDAY, JUNE 21, NOON - 6:30 P.M.** BB, SB, SW, CR, LBR, LBAR @ \$100 w/\$35 EF. BR @ \$100 w/\$25 EF. TR @ \$100 w/\$35 EF per man. Buckle All-around. Rocky Mountain Rodeo Co. **BIG SKY RODEO CENTRAL ENTRY, 406-428-2205.**

**BIG TIMBER RODEO PROMOTION ASSOCIATION, INC. RODEO, BIG TIMBER, MONT., JUNE 24 and 25.** Performances at 7:30 p.m. on June 24, and 6 p.m. on June 25. **EO Monday, June 20, 10 a.m. - 6:30 p.m. CB Tuesday, June 21, Noon - 6:30 p.m.** BB, SB, SW, CR, LBR, LBAR @ \$40 w/\$40 EF; BR @ \$200 w/\$35 EF; TR @ \$200 w/\$40 EF per man. Special Event: Bull Fighting @ \$500 w/\$100 EF. Jacobs Livestock Rodeo Co., Jann Johnson, Secretary. **BIG SKY RODEO CENTRAL ENTRY, 406-428-2205. NO PERMITS.**

**ENNIS RODEO ASS'N. RODEO, ENNIS, MONT., JULY 3 & 4.** Performances at 8 p.m. on July 3, and 2 p.m. on July 4. Slack at 8:30 a.m. on July 3. **EO MONDAY, JUNE 27, 10 A.M. - 6:30 P.M. CB TUESDAY, JUNE 28, NOON - 6:30 P.M.** BB, SW, CR, LBR, LBAR @ \$275 w/\$40 EF; BR @ \$275 w/\$35 EF; SB @ \$400 w/\$40 EF; TR @ \$275 w/\$40 EF per man; JBR, JBAR @ \$100 w/\$15 EF. Special Events: Wild Cow Milking, @ \$200 w/\$30 EF per 3-man team; High Six Saddle Bronc Riding, \$500, winner take all. Powder River Rodeo Pro-

# 1988 APPROVED NRA RODEOS

ductions. Janet Endecott, Secretary. **BIG SKY RODEO CENTRAL ENTRY, 406-428-2205. No Companion Passes.**

**HARLOWTON CHAMBER OF COMMERCE RODEO, HARLOWTON, MONT., JULY 3 and 4.** Performances at 7:30 p.m. on July 3, and 1:30 p.m. on July 4. **EO MONDAY, JUNE 27, 10 A.M. - 6:30 P.M. CB TUESDAY, June 28, NOON - 6:30 P.M.** BB, SB, @ \$300 w/\$40 EF; BR @ \$300 w/\$35 EF; SW, CR, LBR, LBAR @ \$100 w/\$40 EF; TR @ \$100 w/\$40 EF per man; JBR, JBAR @ \$50 w/\$10 EF. Special Events: Rookie Bareback riding @ \$100 w/\$10 EF (must not have won more than \$200, no stock charge, must have signed release). Companion passes honored at contestants' entrance only. Small Rodeo Co. **BIG SKY RODEO CENTRAL ENTRY, 406-428-2205.**

**CHOTEAU AMERICAN LEGION RODEO, CHOTEAU, MONT., JULY 4.** Performance at 2 p.m. Slack (if needed) after the rodeo, approximately 4:30 p.m. **EO JUNE 27, 10 a.m. - 6:30 p.m. CB. JUNE 28, NOON - 6:30 P.M.** BB, SB, @ \$450 w/ \$35 EF. BR @ \$450 w/\$45 EF. SW, CR, LBR @ \$275 w/\$35 EF. TR @ \$275 w/\$35 EF. LBAR @ \$250 w/\$35 EF. Local entries include Glacier County and CCA. Jacobs Livestock Rodeo Co. Elaine Graveley, Secretary. **BIG SKY RODEO CENTRAL ENTRY, 406-428-2205.**

**MUSSELSHELL VALLEY CHAMBER OF COMMERCE RODEO, ROUNDUP, MONT., JULY 4.** Performance at 2 p.m. on July 4. Slack (if needed) after performance. **EO JUNE 27, 10 A.M. - 6:30 P.M. CB. JUNE 28, NOON - 6:30 P.M.** BB, SB, BR, @ \$200 w/\$45 EF. SW, CR, LBR, LBAR @ \$100 w/\$45 EF. TR @ \$100 w/\$45 EF per man. JBR, JBAR @ \$50 w/\$10 EF. Northern Rodeo Co. **BIG SKY RODEO CENTRAL ENTRY, 406-428-2205.**

**EAST HELENA VALLEY RODEO ASSOCIATION RODEO, EAST HELENA, MONT., JULY 8, 9, 10.** Performances at 7

p.m. on July 8 and 9, and 2 p.m. on July 10. Slack (if needed) at 8 a.m. on July 9. **EO MONDAY, JUNE 27, 10 A.M. - 6:30 P.M. CB TUESDAY, JUNE 28, 12 NOON - 6:30 P.M.** BB, SB, BR, SW, CR, LBR, LBAR @ \$250 w/\$35 EF; TR @ \$200 w/\$40 EF per man; JBR @ \$50 w/\$10 EF; JBAR @ \$50 w/\$15 EF. Special Event, Steer Riding, \$15 EF, jackpot. Jacobs Livestock Rodeo Co. Brenda Deyerle, Secretary. **BIG SKY RODEO CENTRAL ENTRY, 406-428-2205.**

**KERR COUNTRY RODEO, POLSON, MONT., JULY 9 & 10.** Performances at 6 p.m. on July 9 and 2 p.m. on July 10. Slack (if needed) at 10 a.m. on July 10. **EO TUESDAY, JULY 5, 10 A.M. - 6:30 P.M. CB WEDNESDAY, JULY 6, NOON - 6:30 P.M.** BB, SB, BR, SW, CR, LBR, LBAR @ \$425 w/\$40 EF. TR @ \$425 w/\$40 EF per man. JBR @ \$100 w/\$25 EF. Rocky Mountain Rodeo Co. **BIG SKY RODEO CENTRAL ENTRY, 406-428-2205.**

**THREE FORKS SADDLE CLUB RODEO, THREE FORKS, MONT., JULY 15, 16.** Performances at 7 p.m. both days. Slack (if needed) at 8 a.m. on July 16. **EO MONDAY, JULY 11, 10 A.M. - 6:30 P.M. CB TUESDAY, July 12, 1988, NOON - 6:30 P.M.** BB, SW, CR, LBR, LBAR @ \$100 w/\$35 EF; BR @ \$100 w/\$25 EF; TR @ \$100 w/\$35 EF per man; JBR, JBAR @ \$25 w/\$20 EF. Special Events: Business Men's Calf Tying. Jacobs Livestock Rodeo Co. Freddie Obrigewitch, Secretary. **BIG SKY RODEO CENTRAL ENTRY, 406-428-2205.**

**MARIAS FAIR, SHELBY, MONT., JULY 22, 23.** Performances at 8 p.m. both days. **EO MONDAY, JULY 18, 10 A.M. - 6:30 P.M. CB TUESDAY, JULY 19, NOON - 6:30 P.M.** BB, SB, SW, CR, LBR, LBAR @ \$200 w/\$35 EF; BR @ \$200 w/\$25 EF; TR @ \$200 w/\$35 EF per man; JBR, JBAR @ \$25 w/\$10 EF. Stock Charge on JBAR. Small Rodeo Co. **BIG SKY RODEO CENTRAL ENTRY, 406-428-2205.**

*Continued on Next Page*



# 1988 APPROVED NRA RODEOS

**CENTRAL MONTANA FAIR, LEWISTOWN, MONT., JULY 28, 29, 30.** Performances at 8 p.m. on July 28 and 29, and 1 p.m. on July 30. **EO MONDAY, JULY 25, 10 A.M. - 6:30 P.M. CB TUESDAY, JULY 26, NOON - 6:30 P.M.** BB, SB, SW, CR, LBR @ \$350 w/\$40 EF; BR @ \$350 w/\$35 EF; TR @ \$350 w/\$40 EF per man; LBAR @ \$150 w/\$35 EF; JBR, JBAR @ \$50 w/\$10 EF. Sheep Riding during intermission. Small Rodeo Co. Stock Charge on JBAR. **BIG SKY RODEO CENTRAL ENTRY, 406-428-2205.**

**INGOMAR RODEO CLUB RODEO, INGOMAR, MONTANA, JULY 31, 1988.** Performance at 2:30 p.m. Slack if needed at 8 a.m. on July 31. **EO July 25, 10 a.m. - 6:30 p.m. CB July 26, Noon - 6:30 p.m.** BB, SB @ \$100 w/\$35 EF; BR @ \$100 w/\$25 EF; SW, CR, LBR, LBAR @ \$75 w/\$35 EF; TR @ \$75 w/\$35 EF per man; JBR and JBAR, Jackpot \$10 EF. Special Event: Top 4 Saddle Bronc Ride-off, \$100 and jacket. Northern Rodeo Co., Alice eron, secretary. **BIG SKY RODEO CENTRAL ENTRY, 406-428-2205.**

**BROADWATER COUNTY FAIR & RODEO, TOWNSEND, MONT., AUG. 6, 7.** Performances at 4 p.m. on Aug. 6, and 2 p.m. on Aug. 7. Slack (if needed) at 8 a.m. on Aug. 7. **EO AUG. 1, 10 a.m. - 6:30 p.m. CB. Aug. 2, Noon - 6:30 p.m.** BB, SB, SW, CR, LBR, LBAR @ \$200 w/\$40 EF. BR @ \$200 w/\$25 EF. TR @ \$200 w/\$35 EF per man. JBR, JBAR @ \$50 w/\$10 EF. Local entries Broadwater County ONLY. Jacobs Livestock Rodeo Co. Secretary, Elaine Graveley. **BIG SKY RODEO CENTRAL ENTRY, 406-428-2205.**

**SUPERIOR LIONS CLUB RODEO, SUPERIOR, MONT., AUG. 6, 7.** Performances at 6 p.m. on Aug. 6 and 2 p.m. on Aug. 7. Slack (if needed) at 9 a.m. on Aug. 7. **EO AUG. 1, 10 A.M. - 6:30 P.M. CB TUESDAY, AUG. 2, NOON - 6:30 P.M.** BB, SB, SW, CR, LBR @ \$200 w/\$35 EF; BR @ \$200 w/\$25 EF; TR @ \$200 w/\$35 EF per

man; LBAR @ \$100 w/\$35 EF; JBR, JBAR @ \$50 w/\$10 EF. Coors jackets to event winners and belt buckle to all-around. Rocky Mountain Rodeo Co. Jill Carpenter, Secretary. **BIG SKY RODEO CENTRAL ENTRY, 406-428-2205.**

**HILL COUNTY FAIR, HAVRE, MONT., AUG. 12 & 13.** Performances at 8 p.m. on Aug. 12, and 1 p.m. and 8 p.m. on Aug. 13. **EO MONDAY, AUG. 8, 10 A.M. - 6:30 P.M. CB. TUESDAY, AUG. 9, NOON - 6:30 P.M.** Prize Money Up from last year (\$400+). Jacobs Livestock Rodeo Co. **BIG SKY RODEO CENTRAL ENTRY, 406-428-2205.**

**SHERIDAN CO. SADDLE CLUB RODEO, PLENTYWOOD, MONT., WEDNESDAY, AUG. 17.** Performance at 7 p.m. Slack (if needed) after the performance. **EO THURSDAY, AUG. 4, 10 A.M. - 6:30 P.M. CB MONDAY, AUG. 5, NOON - 6:30 P.M.** BB, SB, BR, SW, CR @ \$350 w/\$35 EF. TR @ \$350 w/\$35 EF. LBR, LBAR @ \$200 w/\$35 EF. Northern Rodeo Co. Bunky Wirtz, Secretary. **BIG SKY RODEO CENTRAL ENTRY, 406-428-2205.**

**MONTANA FAIR (MetraPark), BIL-LINGS, MONT., AUG. 18, 19.** Performances at 2 p.m. and 8 p.m. both days. Slack at 10 p.m. on Aug. 18 and 8 a.m. on Aug. 19. **EO THURSDAY, AUG. 4, 10 A.M. - 6:30 P.M. CB FRIDAY, AUG. 5, NOON - 6:30 P.M.** BB, SB, BR, SW, CR, LBR, LBAR @ \$1,000 w/\$75 EF. TR @ \$1,000 w/\$75 EF per man. **PERMITS NOT ACCEPTED. NO TRADE-OUTS. NO DRAW OUTS.** Small Rodeo Co. **BIG SKY RODEO CENTRAL ENTRY, 406-428-2205.**

**TRI COUNTY FAIR, DEER LODGE, MONT., AUG. 20-21.** Performances at 7:30 p.m. on Aug. 20 and 2 p.m. on Aug. 21. Slack (if needed) at 8 a.m. on Aug. 21. **EO MONDAY, AUG. 15, 10 A.M. - 6:30 P.M. CB TUESDAY, AUG. 16, Noon - 6:30 P.M.** BB, SB, SW, CR, LBR, LBAR @ \$150 w/\$35 EF; BR @ \$150 w/\$25 EF; TR @



# 1988 APPROVED NRA RODEOS

\$150 w/\$35 EF per man; JBR @ \$50 w/\$10 EF; JBAR @ \$50 w/\$20 EF. Powder River Rodeo Co. **BIG SKY RODEO CENTRAL ENTRY**, 406-428-2205. Stock Charge on JBAR.

## JORDAN V.F.W. POST RODEO, JORDAN, MONT., SATURDAY, AUG. 27.

Performance at 1 p.m. Slack (if needed at 6 p.m. on Saturday, Aug. 27. **EO MONDAY, AUG. 22, 10 A.M. - 6:30 P.M. CB TUESDAY, AUG. 23, Noon - 6:30 p.m. BB, SW, CR, LBR, LBAR @ \$100 w/\$45 EF; SB @ \$100 + 10% of calcutta w/\$45 EF; BR @ \$100 w/\$25 EF; TR @ \$100 w/\$35 EF per man. Kids 12 & Under Barrels, \$5 jackpot; Kids 14 and under Breakaway, \$5 jackpot; Kids 14 and under poles, \$5 jackpot. Northern Rodeo Co. Bunky Wirtz, Secretary. **BIG SKY RODEO CENTRAL ENTRY**, 406-428-2205.**

## JEFFERSON COUNTY RODEO ASS'N. RODEO, BOULDER, MONT., AUG. 27,

28. Performances at 2 p.m. both days, Slack (if needed) at 9 a.m. on Aug. 28. **EO MONDAY, Aug. 22, 10 a.m. - 6:30 p.m. CB TUESDAY, AUG. 23, NOON - 6:30 P.M. BB, SB, SW, CR, LBR, LBAR @ \$200 w/\$35 EF; BR @ \$200 w/\$25 EF; TR @ \$200 w/\$35 EF per man; JBR @ \$50 w/\$10 EF. Special Event: Novice Bareback Riding @ \$50 w/\$10 EF. Powder River Rodeo Productions. **BIG SKY RODEO CENTRAL ENTRY**, 406-428-2205.**

## RAVALLI COUNTY FAIR, HAMILTON, MONT., SEPT. 1 & 2. Performances at 8

p.m. both days. Slack on Sept. 1 after performance. **EO AUG. 29, 10 A.M. - 6:30 P.M. CB. TUESDAY, AUG. 30, NOON - 6:30 P.M. BB, SB, SW, CR, LBR @ \$150 w/\$35 EF. BR @ \$150 w/\$25 EF. TR @ \$150 w/\$35 EF per man. JBR @ \$50 w/\$10 EF. Powder River Rodeo Productions. **BIG SKY RODEO CENTRAL ENTRY**, 406-428-2205.**

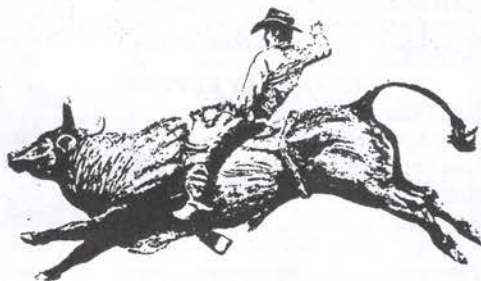
**SANDERS COUNTY FAIR, PLAINS, MONT., SEPT. 3 & 4.** Performances at 8 p.m. on Sept. 3 and 2 p.m. on Sept. 4. Slack on Sept. 3 after the show. **EO Monday, Aug. 29, 10 a.m. - 6:30 p.m. CB Tues., Aug. 30, Noon - 6:30 p.m. BB, SB, BR, SW, CR, LBR @ \$350 w/\$35 EF. TR @ \$350 w/\$35 EF; LBAR @ \$200 w/\$35 EF; JBR @ \$100 w/ \$10 EF. Big Sky Rodeo Central Entry**, 406-428-2205.

## MEAGHER COUNTY RODEO CLUB RODEO, WHITE SULPHUR SPRINGS, MONT., SEPT. 4, 5. Performances at 1:30

p.m. both days. Slack (if needed) at 8 a.m. on Sept. 5. JBAR stock charge. **EO MONDAY, AUG. 29, 10 A.M. - 6:30 P.M. CB TUESDAY, AUG. 30, NOON - 6:30 P.M. BB, SB, SW, CR, LBR, LBAR @ \$200 w/\$35 EF; BR @ \$200 w/\$25 EF; TR @ \$200 w/\$35 EF per man; JBR, JBAR @ \$50 w/\$15 EF. Special Events: Novice Barrel Racing @ \$100 w/\$15 EF; Rookie Bareback Riding (with signed release) @ \$100 w/\$15 EF; Local Kids Barrel Racing @ \$25 w/\$5 EF. Small Rodeo Co. **BIG SKY RODEO CENTRAL ENTRY**, 406-428-2205.**

**PLEASE NOTE: A NEW RULE ADOPTED BY THE NRA IN 1988 READS AS FOLLOWS: The entry fees in the Bull Riding Event Will be Scaled to the Added Money as Follows:**

\$100-\$200 Added..... \$25 Entry Fee  
 \$201-\$400 Added..... \$35 Entry Fee  
 \$401-\$500 Added..... \$45 Entry Fee  
 \$501-\$750 Added..... \$50 Entry Fee  
 \$751-\$1000 Added..... \$75 Entry Fee  
 \$1001-Over Added... Fees Set by Board



# Final Standings — Big Sky Region NIRA

## AFTER 10 RODEOS

### MEN'S TEAM

1. Montana State University	3,870.0
2. Western Montana College	1,952.5
3. Dawson Community College	1,942.5
4. Northwest Comm. College	1,310.0
5. Miles Community College	925.0

### WOMEN'S TEAM

1. Montana State University	1,883.3
2. Western Montana College	890.0
3. Dawson Community College	380.0
4. Northwest Comm. College	250.0
5. Eastern Montana College	100.00

### MEN'S ALL-AROUND

1. Rex Phillips, Montana State	1,120
2. Ken Lensegrave, Montana State	885
3. Todd Garrison, WMC	660
4. Gary Eichhorn, WMC	470
5. Chris Mathison, MSU	450

### WOMEN'S ALL-AROUND

1. Tammy Jo Risa, MSU	768.3
2. Lisa Schillinger, MSU	655.0
3. Holly Hallinan, WMC	525.0
4. Molly McAuliffe, MSU	490.0
5. Lisa Crowley, MSU	270.0

### BAREBACK RIDING

1. Ken Lensegrave, MSU	565
2. Doug Johnston, DCC	350
3. Rex Phillips, MSU	270
4. Scott Tomlin, Miles	240
5. Gary Eichhorn, WMC	210
6. Scott Robbie, MSU	205
7. Delbert Moore, MCC	180
8. Marc Murfitt, MSU	145
9. Jeff Miller, MSU	115
10. Darren Holeman, DCC	60

### SADDLE BRONC RIDING

1. Rod Hay, NWCC	530
2. Rex Phillips, MSU	435
3. Ken Lensegrave, MSU	360
4. Dan Mortensen, NWCC	350
5/6/7. Ryan Mapston, WMC	180
5/6/7. Jay Obrigewitch, MSU	180
5/6/7. Denny Hay, DCC	180
8. Ed Holeman, DCC	180
9. Jeff Miller, MSU	85
10. Matt Wald, MSU	80

### BREAKAWAY ROPING

1. Lisa Pulse, MSU	235
2. Jody Applegate, DCC	230
3. Lisa Schillinger, MSU	210
4. Holly Hallinan, WMC	195
5. Lori Rooney, EMC	185
6. Colette Clark, NWCC	175
7. Tammy Jo Risa, MSU	170

8. Lori Robinson, DCC	165
9. Molly McAuliffe, MSU	160
10. Shirley Parini, MSU	125

### GOAT TYING

1. Tammy Jo Risa, MSU	480
2. Donna Spitzer, MSU	370
3. Lisa Schillinger, MSU	335
4. Holly Hallinan, WMC	305
5. Lisa Crowley, MSU	300
6. Stephanie Ley, WMC	235
7. Becky Kington, WMC	115
8. Lori Rooney, EMC	100
9. Marla Jeffers, MSU	73.3
10. Bobbie Jo Bertrand, WMC	70

### BULL RIDING

1. Rex Phillips, MSU	460
2. Sterling Lamb, MCC	285
3. Don Nahrgang, WMC	270
4. Denny Hay, DCC	260
5. Dan Weigert, EMC	235
6. Dan Mortensen, NWCC	225
7. Marc Murfitt, MSU	170
8/9. Monte Finn, MSU	120
8/9. Joe Nahrgang, WMC	120
10. Mike Skeels, MCC	110

### CALF ROPING

1. Chris Mathison, MSU	330
2. Casey Rindal, MSU	250
3. K. C. Murphy, MSU	240
4/5. Shawn Knight, DCC	230
4/5. Bill Boyce, MSU	230
6. Laramie Baumann, MSU	220
7. Stacey Ellis, DCC	195
8. Chuck Fields, DCC	160
9. Steve Currin, MSU	150
10. Gary Eichhorn, WMC	140

### STEER WRESTLING

1. Todd Garrison, WMC	410
2. Chuck Fields, DCC	270
3/4. Dan Larick, MSU	230
3/4. Dean Wang, UM	230
5. Laramie Baumann, MSU	200
6. Robert Kaufman, DCC	170
7. Tim Garrison, WMC	165
8. John Gee, MSU	155
9. K. C. Murphy, MSU	145
10. Steve Currin, MSU	135

### BARREL RACING

1. Molly McAuliffe, MSU	450
2. Lisa Schillinger, MSU	305
3. Rayna Prewitt, MSU	275
4. Becky Kington, WMC	260
5. Darcy Nevala, MSU	223.3
6. Tammy Jo Risa, MSU	200

Continued on Next Page



# Information for Judges

All judges are asked to read this valuable information before judging the rodeo.

## I. PRE-RODEO

- A. Re-read rule book.
- B. Contact contractor to determine time for draw.
- C. Two hours before rodeo.

1. Measure and record barrel pattern markings.

2. Measure and record barrier length.

3. Record numbers on all timed event cattle (double check contractor)

### D. One Hour Before Rodeo

1. Draw timed event cattle; a. make four copies; b. post draw.

2. Decide who will flag timed events.

3. Decide who will be barrier judge.

4. Get a stop watch and flag.

5. Obtain barrier and breakaway string.

6. Find a gentle flag horse.

## II. RODEO

A. Find out if you are to ride in the grand entry.

B. Find out if there is a vest to wear.

## III. RIDING EVENTS

A. Use the spread;

- 1. Saves time
- 2. Saves headaches

B. Question every re-ride or re-run

1. It doubles someone's chances

2. Irritates the stock contractor

## IV. TIMED EVENTS

A. Flag all the same - slow

B. Know your position in the arena

C. Flagger can watch for nod, too

D. Line judge

- 1. check barrier
- 2. check string
- 3. check number on each animal

4. watch nod

5. make sure pin pulls properly

6. make sure pusher does not make contact with neck rope

7. record plus tens

8. MUST be familiar with rulebook; this is a technical job!

## V. POST-RODEO

A. Remove draw

B. Tally scores and turn them into the rodeo secretary

C. Double check plus tens with secretary

D. Determine time of draw for next performance

E. If last performance, sign 3% sheet.

## VI. ADVICE

A. To avoid trouble, stay out of beer garden.

B. Remember the line judge has a pressure job.

C. Avoid visiting with contestants. It appears that markings are being discussed.

D. Avoid flagging an event that includes spouse, relative, traveling partner.

E. Stay off booze before performance.

F. Remember: judges are being paid by the contestants as well as the contractor.

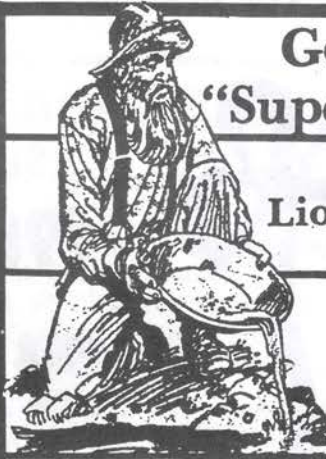
## Big Sky Region Standings

Continued From Previous Page

7. Missy Lytle, DCC.....	183.3
8. Deanna Bertrand, WMC.....	160
9. Katie Grasky, MSU.....	140
10. Shirley Parini, MSU.....	135

### TEAM ROPING

1. Chris Mathison, MSU.....	260
2. K.C. Murphy, MSU.....	235
3. Todd Garrison, WMC.....	207
4. Laramie Baumann, MSU.....	202
5. Chick Fields, DCC.....	185
6. Dale DeCock, WMC.....	180
7. Stacey Ellis, DCC.....	155
8. Tim Garrison, WMC.....	137.5
9. Tyler Nickelson, MCC.....	115
10. Shawn Knight, DCC.....	112.5



**Go For the  
"Superior Gold"**

**Superior  
Lions Club Rodeo**

**August 6 & 7, 1988**

Top Money Winner  
3 Years

1 oz. of Gold/Year

**Roger Brockway Box 667 Superior, MT 59872**

# 1988 NRA RULE CHANGES

## PLEASE ADD THE FOLLOWING RULES TO YOUR RULE BOOK.

Page 7, No. 9 — Non Contesting Membership dues of \$25 applying to all contract personnel, Timers, Secretaries, Pickup Men, Contract Acts, Clowns, and Announcers.

Delete Current Page 7, No. 9 Ruling.

Page 16, added to No. 3 for clarification — When less than the number of contestants place in an event than the proper payoff for that event, the places paid will be in accordance with the numbers qualified. Example: 1 qualified, receives 100%; 2 qualified, 60/40; 3 qualified, 50/30/20, etc. If all contestants fail to qualify, the entry fees and added money for that event will be sent to the NRA office to be included as added money for the NRA Finals Rodeo, allowing contestants to compete back at that money.

Page 8, No. 3, Bull Riding: The entry fees in the Bull Riding Event will be scaled to the added money as follows:

\$100-\$200 Added Money, \$25 Entry Fee.

\$201-\$400 Added Money, \$35 Entry Fee.

\$401-\$500 Added Money, \$45 Entry Fee.

\$501-\$750 Added Money, \$50 Entry Fee.

\$751 - \$1000 Added Money, \$75 Entry Fee.

\$1001 and Over Added Money, Fees Set by Board.

Page 16, Under rodeo payoff — For the Bull Riding event only, there will be a sidepot (Day Money) entry fee of \$25 in addition to the appropriate entry fee for the rodeo. The original entry fee will be included with the added money for the rodeo, 3% taken off, and proper payoffs made. The additional \$25 of "sidepot" (day money) entry fee, less 3%, will be paid out equally to the bull riders who qualify in a given performance. Example: 10 bull riders up in a performance, 2 qualify. All paid sidepot day money fees of \$25.

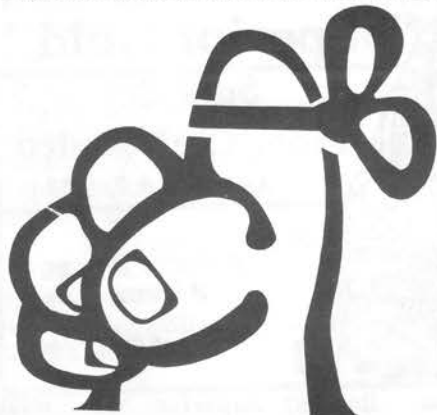
The sidepot day money entry fees are \$25 times 10 bull riders equals \$250. Three percent will be taken off the \$250 (\$7.50) which equals \$242.50. This total will be split evenly among the qualifiers. \$242.50 divided by two equals \$121.25 to each qualifier. The day money will count towards the association standings. If all bull riders in a performance fail to qualify, a ground split of day money will be made. Ground split money

will not count for association points. Slack will be considered a performance. \$1 charge per bull rider will be assessed for the rodeo secretary, in addition to the \$25 day money fee.

Page 58, Rough Stock Selection — Any NRA Stock Contractor who meets the criteria to bring stock to the NRA Finals Rodeo will choose two feature animals in the bareback, saddle bronc, and bull riding events that will automatically come to the finals. The contractor then nominates additional stock to be voted on by the top 15 contestants in the respective events. The final performance finals stock will be the high marked animals on the judges cards from the Friday and Saturday performances.

Page 46, Dally Team Roping Rules — In the Team Roping Event, a heeler may tie on if over 50 years old.

Central Entry: Any contestant who draws out of a rodeo after receiving their first preference of performances at a given rodeo or rodeos will be fined \$20 per infraction.



**Don't Forget —  
SEND IN YOUR  
1988 DUES!**

**YOUR LAST NEWSLETTER  
ON 1987 NRA CARD  
WILL BE JUNE**



# ARENA DUST

Congratulations to NRA member Rob Kountz of Bozeman, who won the first annual Montana Timed Event Championship promoted by Tom Holland in Dillon over the Memorial Day weekend. Fred Hirschev of Jackson was runner-up.

Rex Phillips was the winner of Willard Moore's first annual Big Sky Bull Riding held at the Metra in Billings on May 14. Fifty bull riders tested the toughest of the bulls of Dale Small and Marvin Brookman during the two go-around event.

Peggy and Mike Smith are the parents of a 10 pound baby boy born June 6. He measured 22¼ inches long, has been named Guy Michael,

and has two older sisters to boss him around at home. Congratulations, Peggy and Mike! Was it worth the wait?

Mr. and Mrs. Ray Brekke were the objects of a benefit held in Helena on June 4, to raise money for their newborn son, Riley Daniel, who was born April 4 with multiple birth defects. The Brekkes have no insurance and have medical bills so high they would knock your hat off. Spending a lot of time in the hospital in Salt Lake, along with a number of surgeries later, will add to the medical bills. Anyone who would like to help this young family out can donate to the Ray Brekke fund, P.O. Box 5719, Helena, Mont. 59601. Thanks to Pat

Chevalier of Helena for this information.

Jann reminds everyone that rule books are not being sent out this year to save postage costs. If you want one, request one from Jann.

Andy Goyins of Helena is planning a "Rodeo Reunion" in Helena for all those who rodeoed in 1978-79, or thereabouts. The event is scheduled for Aug. 20 and 21. More information on this later, but if anyone is interested, contact Allen Pursley at Broken Arrow Saddlery in Westgate Mall in Great Falls, phone 454-1821.

## HOW TO ENTER NRA RODEOS THROUGH BIG SKY RODEO CENTRAL ENTRY DIAL 406-428-2205

1. Entries will be open from 10 a.m. to 6:30 p.m. every Monday. Call backs will be on Tuesdays from 12 Noon to 6:30 p.m. UNLESS OTHERWISE ADVERTISED.

2. Give the following information when entering a rodeo.

(a) Name of Rodeo

(b) Your N.R.A. Membership Card Number

(c) Your Name

(d) The event or events you want to enter

(e) Preferences you have on when you want to be up.

(f) Name of buddy or buddies — two per event, six total

(g) If multi-rodeo weekend, give information for each rodeo you wish to enter.

3. Every conversation, both entries and call backs, are recorded on tape, and each cowboy is given the verification number for that conversation. YOU MUST HAVE THIS VERIFICATION NUMBER IF THERE ARE ANY QUESTIONS REGARDING YOUR ENTRY OR CALL BACK.

10. Call Back on Tuesday to find out when you are up.

*ANY CONTESTANT WHO DRAWS OUT OF A RODEO AFTER RECEIVING THEIR FIRST PREFERENCE OF PERFORMANCES AT A GIVEN RODEO OR RODEOS WILL BE FINED \$20 PER INFRACTION.*

# 1988 Northern Rodeo Association Membership Application

Social Security # \_\_\_\_\_

P.O. BOX 1122  
BILLINGS, MT 59103  
PHONE: 406-252-1122

MEMBER 1988 \_\_\_\_\_ yes \_\_\_\_\_ no \_\_\_\_\_ CARD # \_\_\_\_\_ DATE \_\_\_\_\_

NAME \_\_\_\_\_ Social Security # \_\_\_\_\_  
MANDATORY

ADDRESS \_\_\_\_\_ TOWN \_\_\_\_\_ STATE \_\_\_\_\_ ZIP \_\_\_\_\_

PHONE NUMBER \_\_\_\_\_ NEW MEMBERS, ARE YOU ELIGIBLE FOR NRA ROOKIE AWARDS? \_\_\_\_\_

<b>1988 NRA MEMBERSHIP</b>	<b>JUNIOR MEMBERSHIP</b>	<b>1988 NRA PERMIT</b>	<b>HIGH SCHOOL RODEO ASSN.</b>
\$70.00 through April 15	14 Years & Under	\$35.00	\$35 through April 15
\$80.00 April 16 forward	\$10.00	\$500 money won limit	\$40 April 16 forward

High School Card # \_\_\_\_\_  
(Card number required or application not processed)

**NON-CONTESTING MEMBERS: \$25.00**

**Timers, Secretaries, Pick Up Men, Contract Acts, Clowns, and Announcers**

**MEMBERSHIP:** Entitles purchaser to work all sanctioned rodeos without restriction, to share in all advantages of a member in good standing including such items as a guarantee of your entry fee, check writing privileges after the first year initiation period and a subscription to the Newsletter.

**NEWSLETTER:** The official publication of the NRA featuring current data regarding the Association and NRA sanctioned rodeos, information of all association business, as well as many interesting new articles and action photos.

**PERMITS:** Entitles purchaser to work all sanctioned rodeos accepting permits as listed in the newsletter until \$500 is won. After \$500 money limit is won by permit holder, a card must be purchased. The price of said card to be the dollar difference between the cost of a permit and the cost of the card. Permit holder's points will be credited to the year end standings, however, the contestant must be a card holder to compete at the NRA Finals Rodeo. The \$500 money limit will be accumulated from year to year, allowing the contestant to purchase a permit each year until the \$500 is won. A card holder the previous year CANNOT purchase a permit the following year.

### STATEMENT AND RELEASE

This form must be completed, signed, notarized, and on file with Northern Rodeo Association, Inc. before applicant may be issued a membership card.

I, \_\_\_\_\_, represent to Northern Rodeo Association, Inc. that I am fully aware that participation in rodeo events may be hazardous; that I am familiar with rodeo stock, facilities, equipment, and procedures; that I am capable of determining for myself whether rodeo stock is suitable and rodeo facilities, equipment, and procedures are safe and proper; and that I will not participate in any rodeo approved by Northern Rodeo Assoc., Inc. without first determining for myself whether the stock is suitable and the facilities, equipment, and procedures are safe and proper.

I understand fully that Northern Rodeo Assoc., Inc. will rely upon these representatives in determining whether to accept me as a member.

I agree, in consideration for my acceptance as a member, to save Northern Rodeo Assoc., Inc. and its agents harmless in the event of any claim for injury to my person or property resulting from my participation in any rodeo event approved by Northern Rodeo Assoc., Inc. and I do by these present release and discharge Northern Rodeo Assoc., Inc. and its agents as well as the promoters, managers, employees, and helpers from any claim for injury to my person or property, past, present, or future, resulting from my participation in any such rodeo event.

I have carefully read the foregoing statement and release and I fully understand the effect of my signing it.

\_\_\_\_\_  
SIGNATURE \_\_\_\_\_  
DATE

(Complete below if applicant is a minor under the law of the state of residence & High School Rodeo Assn. Members.)

I declare that I am one of the parents and natural guardians of the above named minor; that I have carefully read the foregoing statement and release; that I know the representations made are true; and that I agree to be bound by the terms of the statement and release both personally and as representative of the interests of the minor.

\_\_\_\_\_  
SIGNATURE \_\_\_\_\_  
DATE

\_\_\_\_\_  
SIGNATURE \_\_\_\_\_  
DATE

Subscribed and sworn to before me this \_\_\_\_\_ date of \_\_\_\_\_, 19\_\_\_\_\_.

\_\_\_\_\_  
NOTARY PUBLIC \_\_\_\_\_  
DATE COMMISSION EXPIRES

(SEAL)



# APPROVED NRA JUDGES - 1988

ADAMS, GARY  
3223 Durston Road  
Bozeman, Mont. 59715

BRATSKY, BUTCH  
3711 Hayden Drive  
Billings, Mont. 59106  
652-4950

BABCOCK, WAYNE  
7950 Pinto Drive  
Shepherd, Mont. 59079  
373-6283

BUSHNELL, JIM  
Box 6266  
Helena, Mont. 59604  
442-5731

AVERY, DAVID  
5809 Gooch Hill Road  
Bozeman, Mont. 59715  
587-5046

COOK, GEORGE  
Box 157  
Vaughn, Mont. 59487  
965-3639

DELANEY, M.R.  
Grass Range, Mont. 59032  
428-2112

GRAVELEY, BOB  
2 Rilev Road  
Tow and, Mont. 59644  
266-5604

HILL, JOHN  
Box 108  
Geysers, Mont. 59447  
735-4484

HOUGH, GLEN  
5301 Homer Davis Road  
Shepherd, Mont. 59079  
373-5986

HALVORSON, DANNY  
Box 34  
Greycliff, Mont. 59033  
932-6599

HEISER, JIM  
4426 Mitchell  
Billings, Mont. 59101  
252-2766

HENDRICKSON, R.T.  
Route 1 Box 306  
Arlee, Mont. 59821  
726-3762

KINGSTON, JEFF  
848-4th Avenue West  
Kalispell, Mont. 59901  
755-1027

LENNING, DUANE  
Box 247  
Columbus, Mont. 59019  
322-5517

LUMAN, PHIL  
Road 24 South Box 2545  
Ballantine, Mont. 59006  
967-2337

MILLER, EDDIE  
Route 1 Box 2882  
Absarokee, Mont. 59001  
328-4126

MYERS, GEORGE  
RR 1 Box 125  
Reed Point, Mont. 59069  
932-6553

MAJERUS, DAN  
Box 1061  
Conrad, Mont. 59425  
278-3434

LOGAN, JIM  
2940 Prairie Drive  
Billings, Mont. 59101  
252-1668

NAGLE, JOHN  
4058 Skaar Route  
Sidney, Mont. 59270  
482-4010

NORDAHL, SKEETER  
2929 Magnolia  
Helena, Mont. 59601  
227-8520

MAVITY, MONTY  
703 North Thrush #32  
Glendive, Mont. 59330  
365-2360

PASHA, PEE WEE (ELVIN)  
Helmville, Mont. 59843  
793-5672

REEVERTS, STEVE  
Box 301  
Vaughn, Mont. 59487  
965-3597

SCHALL, BOB JR.  
Route 1 Box 4372  
Arlee, Mont. 59821  
726-3601

SMITH, MIKE  
Box 213  
Laurel, Mont. 59044  
628-2045

STOKES, FRANK  
Box 5212  
Bozeman, Mont. 59715  
587-4954

STOVALL, BILL  
RR 2  
Red Lodge, Mont. 59068  
445-2306

TWITCHELL, JUDD  
Jordan, Mont. 59337  
557-2554

WORTMAN, LEONARD  
Box 65  
Kalispell, Mont. 59901  
752-1448

WOLLENBURG, JOHN  
c/o Eaton's Ranch  
Wolf, Wyo. 82844  
307-655-9552

WOOD, PHIL  
Box 511  
Birney, Mont. 59012  
984-6267

## THANK YOU

A very special THANKS to all the NRA members who stepped in and helped me out at Poplar during that rodeo when the heat was so unbearable. A special thanks to Glen Hough for all his work, which seemed to be duties above and beyond the call of a president. People like you are what makes rodeo tick, and I appreciate all the help. Thanks so much.

Larry Wirtz



# JUNE 1988

SUN	MON	TUE	WED	THUR	FRI	SAT
Poplar	Entries Absarokee	Call Backs Absarokee	1	2	3	4 Poplar
5	6	7	8	9	10	11 Absarokee
Absarokee	Entries Wilsall	Call Backs Wilsall				Wilsall
12	13	14	15	16	17	18
FATHER'S DAY Wilsall	Entries Big Timber Gardiner	Call Backs Big Timber Gardiner			Big Timber	Big Timber Gardiner
19	20	21	22	23	24	25
Gardiner	Entries Ennis Harlowton Choteau Roundup East Helena	Call Backs Ennis Harlowton Choteau Roundup East Helena	29	30		
26	27	28				

CENTRAL ENTRY — 406-428-2205



**— ATTENTION —**

**HARLOWTON SLACK:  
JULY 2 — 1:00 P.M.**

**SHELBY SLACK:  
FRIDAY, JULY 22  
AFTER PERFORMANCE**

**LEWISTOWN SLACK:  
SAT., JULY 30 — 8 A.M.**

**CORRECTION ON ADDED MONEY IN BIG TIMBER:  
\$400<sup>00</sup> ADDED — BB, SB, SW, CR, LBR, LBAR  
\$40 FEES**

# JULY 1988

SUN	MON	TUE	WED	THUR	FRI	SAT
					CANADA DAY	
Ennis Harlowton	Ennis Harlowton Choteau Roundup	Ennis Poison	Call Backs Poison		East Helena	East Helena Poison
3	4	5	6 LAST QUARTER	7	8	9
East Helena Poison	Ennis Three Forks	Call Backs Three Forks			Three Forks	Three Forks
10	11	12	13 NEW MOON	14	15	16
	Ennis Shelby	Call Backs Shelby			Shelby	Shelby
17	18	19	20	21	22 FIRST QUARTER	23
24	Ennis Lewistown Ingomar	Call Backs Lewistown Ingomar		Lewistown	Lewistown	Lewistown
Ingomar	25	26	27	28	29	30
31					FULL MOON	

ENTER ALL RODEOS ON MONDAY  
 (UNLESS OTHERWISE INDICATED)  
 CALL BACKS FOR ALL RODEOS TUESDAYS  
 (UNLESS OTHERWISE INDICATED)



# AUGUST 1988

SUN	MON	TUE	WED	THUR	FRI	SAT
	Entries Townsend Superior	Call Backs Townsend Superior		Entries Plentywood Billings	Call Backs Plentywood Billings	Townsend Superior
	1	2	3	4 <small>LAST QUARTER</small>	5	6
Townsend Superior						
7	8	9	10	11	12 <small>NEW MOON</small>	13
	Entries Deer Lodge	Call Backs Deer Lodge	Plentywood	Billings	Billings	Deer Lodge
14	15	16	17	18	19	20 <small>FIRST QUARTER</small>
Deer Lodge	Entries Jordan Boulder	Call Backs Jordan Boulder				Jordan Boulder
21	22	23	24	25	26	27 <small>FULL MOON</small>
Boulder	Entries White Sulphur Hamilton Plains	Call Backs White Sulphur Hamilton Plains		SEPT. 1 Hamilton	SEPT. 2 Hamilton	SEPT. 3 Plains
28	29	30	31			

# NRA AWARDS DONORS

**BRUCE CORNELL**  
P.O. Box 220  
Angusta, Montana 59410  
Phone 406-562-3392

*I Want to Be Your  
Life Insurance Agent*

## STACEY'S OLD FAITHFUL BAR

*"Where the West Is Still the West"*  
GALLATIN GATEWAY, MONT. 59730

## Above All, RESISTOL®

MORE WINNERS WEAR RESISTOL.  
MIGHT BE A COINCIDENCE.  
MIGHT NOT.



BAREBACK RIDING SPONSOR

P. O. BOX 1781  
BILLINGS, MONT. 59103  
PHONE 245-6447

FOR RENT

FOR RENT

## Pioneer Federal

Savings  
and Loan Association



401 Milwaukee Ave.  
Deer Lodge  
846-2202

102 N. Washington,  
Dillon  
683-5191

JR. BARREL RACING SPONSOR

## ROBERTS' ROPING CALVES

BERTHA AND BUD ROBERTS  
BALLANTINE, MONTANA 59006



# NRA AWARDS DONORS



## QUALITY SUPPLY, INC.

*Ranching, Logging, Industrial  
Animal Health, Livestock Equipment*

2904 W. Broadway  
Missoula, MT 59802  
549-2355

201 E. Helena  
Dillon, MT 59725  
683-6855

**JR. BARREL RACING SPONSOR**

## BEAVERHEAD LIVESTOCK AUCTION

7225 HWY. 91 S.  
DILLON, MONTANA 59725



406/683-2002

**JR. EVENTS SPONSOR**

## C & C Farm & Ranch Supply

211 N. Montana Dillon, Mont. 59725

"Supporting our young contenders  
since 1980"

**Jack Champine — Joe Champine**

**JR. BARREL RACING SPONSOR**



FAMILY DINING

PIZZA  
SANDWICHES  
CHICKEN  
VIDEO GAMES  
POOL TABLES  
WE DELIVER

683-6432 10 N. Montana



## STATE BANK & TRUST

"Dillon's only locally owned independent bank"

MEMBER F.D.I.C.

CHECKING • SAVINGS • LOANS • DRIVE-IN  
WALK UP • BANK BY MAIL • NIGHT DEPOSITORY

**JUNIOR EVENTS SPONSOR**

Glendale & Idaho, Dillon, MT

406-683-2393

## HANSON SILVERSMITHS KENNY HANSON

1729 CHERRY HEIGHTS ROAD  
THE DALLES, ORE. 97058  
PHONE 503-296-2410

## USF&G LIFE INSURANCE BULL RIDING SPONSOR

Contact Your

1625 ELEVENTH AVE.  
HELENA, MONT. 59601



## LOG CABIN ANTIQUES

MITCHELL AVENUE  
HARDIN, MONTANA 59034

BY APPOINTMENT ONLY 406/665-2525  
ROY & MARY MARTINSEN - PROP.

**JR. BARREL RACING SPONSOR**

# NRA AWARDS DONORS

## JOHN BENSON QUARTER HORSES

REGISTERED QUARTER HORSES  
FOR SALE  
Joe Reed and Robin Reed Blood Lines  
CALL 406-429-6761 or 252-5920  
MELSTONE, MONTANA



## KING'S SADDLERY

BOB & BRUCE KING  
Sheridan, Wyoming  
HOME OF KING ROPES.  
COMPLETE LINE OF ROPES  
AND TACK  
SADDLE BRONC RIDING SPONSOR



Bar  
and  
Chuckwagon Cafe  
201 FIRST AVE. NORTH  
BILLINGS, MONTANA  
252-2408

Hats  
Belts  
Buckles  
Boots  
Saddles



Horse Tack  
& Supplies  
Shoe & Saddle  
Repair

883-6822

TIM HOLYK  
316 - 1st St. East — Polson, Mont. 59860



Sherrie  
Chenovick  
Awards  
&  
Specialties

3117 Cooney Dr., Suite 101 Helena, MT 59601  
Phone 449-6353  
Plaques, Trophies  
Rubber Stamps  
Laser Engraving Art

PHONE (406) 538-7448



MIDSTATE  
BANK OF MONTANA  
P.O. BOX 660  
LEWISTOWN, MONTANA 59457

# BAR



Between Belt & Great Falls  
For Reservation Phone 761-9550



## LOUNGE AND SUPPER CLUB



# NRA AWARDS DONORS

**Jonny ★  
Lama**  
N.A.R.C. SPONSOR

## HOLT SADDLERY

DILLON, MONTANA  
PHONE 683-5018  
*Jr. Events Sponsor*

**Graphic Arts Studio**

CHARY MAJERUS, ARTIST

BOX 1061 — CONRAD, MONT. 59425  
PHONE (406) 278-5980

- Specializing in Custom Orders of*
- SIGN PAINTING
  - CALLIGRAPHY
  - GRAPHIC ART & DESIGN
- (And Rodeo Photography on a Limited Basis)

*"The Working Cowboy's Store"*



**THREE  
FORKS  
SADDLERY**

(406) 285-3459

CARL & NANCY PETERSEN

**CUSTOM SADDLES, CHAPS,  
BELTS & TACK**



*"We Ship Anywhere"*

FOUR CORNERS — BOZEMAN, MONT.  
(406) 587-7503

GIN ROEN



P.O. BOX 9044  
HELENA, MONTANA 59604

**HB**

**Holland & Bramlette**  
Insurance Services, Inc.

**TOM HOLLAND — TOM BRAMLETTE**  
**MARK LUNDBERG**  
STEER WRESTLING

310 East Seabee  
P.O. Box 1145  
Dillon, Montana 59725

DONOR

Phone  
683-6881



SINCE 1880  
**ELIEL'S**  
DEPARTMENT STORE  
DILLON, MONTANA

MICHAEL J. CROSSER

MENSWEAR • WOMENSWEAR • SHOES • KIDSWEAR • TUXEDO  
RENTAL • BRIDAL REGISTRY • MIKE'S CUSTOM TEES AND CAPS  
4 NORTH IDAHO STREET • DILLON, MONTANA • (406) 683-2305

**Congratulations, NRA Contestants**  
**WESTERN WEAR? WE HAVE IT!!!**  
STEER WRESTLING DONOR

# NRA AWARDS DONORS



## HILL PHOTO

Rodeo & Sports Photography

MARY HILL 406-735-4484  
 BOX 108  
 GEYSER, MONT. 59447

## CUSTOM MINERALS



VIGORTONE Quiet Rancher



## CAP Feeds

Crystalux

101 N. MONTANA  
 DILLON, MT 59725  
 406-683-6315

TRACY GRIGGS  
 683-6701

MIKE COLLINS  
 683-6315

ACCOUNTING REAL ESTATE INSURANCE



Stan Rasmussen — Jay Dunckel — Ken McArthur  
 Will Rasmussen — John Buck  
 Your Independent Insurance Agent

**Will Rasmussen**  
 BOX 921  
 CHOTEAU, MT. 59422  
 BULL RIDING  
 DONOR

**RODEO ANNOUNCER**

HOME 466-2855  
 OFFICE  
 466-5772

## CABIN CREEK BAR

GEYSER, MONTANA

"Where Good Friends Meet"

LOY HOWELL

DONORS OF LADIES ALL-AROUND BUCKLE

## GEYSER GROCERY

BILL AND CAROL SHERMAN

GEYSER, MONTANA

CO-SPONSOR OF LADIES ALL-AROUND BUCKLE

## EWY'S STORE

WESTERN WEAR, SPORTSWEAR  
 AND TACK

THE MURNIONS

JORDAN, MONT. 557-2860

## GEYSER ELEVATOR

YOUR COMPLETE FEED & FERTILIZER STORE  
 TOM LUTHER, MANAGER

GEYSER, MONT. 735-4302



# NRA AWARDS DONORS



Quality Merchandise  
Since 1912



## Billings Sheraton Hotel

SHERATON HOTELS, INNS & RESORTS  
WORLDWIDE  
THE HOSPITALITY PEOPLE OF ITT  
27 NORTH 27TH STREET  
BILLINGS, MONTANA 59101  
(406) 252-7400

### WESTERN VOICE TALENT

5 YEAR NRA  
CONTESTANT  
AND FINALIST



Remote Microphone  
For Horseback  
Announcing

3530 HARMONY RD.  
HELENA, MONT. 59601

(406)  
227-8135

Rodeo Announcer Auctioneer

Graduate Bob Tallman/Bob Feist  
Rodeo Broadcasting Clinic

SADDLE DONOR

## Patterson's Western Outfitters

LEE PATTERSON  
WHITEFISH  
CALF ROPING SADDLE DONOR

## Cleaver Cattle Company

M.C. AND ED MILLER  
ABSAROKEE, MONT.  
DEALERS IN LIVESTOCK  
Breakaway Roping Sponsors

## RIMROCK TIRE



MICHELIN

Billings, Montana



## Hوجلund's

WORK & WESTERN WEAR  
306 First Avenue South  
Great Falls, Montana 59401

A Little Bit of Country  
Right in the Middle of Downtown



## BIG R SUPPLY

Automotive - Farm - Home - Ranch

4800 Tenth Ave. South Great Falls

LADIES ALL-AROUND SPONSOR

# NRA AWARDS DONORS



## ROCKY MOUNTAIN SADDLE CO.

Custom Saddlemaking and Repair

Chaps • Tack • Belts • Leather Goods

In The Red Barn on West Main  
Bozeman, Mont.

PHONE (406) 586-2929

## Glennie Ranch

TWO DOT, MONTANA

Breakaway Roping Sponsor

# TEAM UP

With Coors  
& Coors Light



© 1985 Adolph Coors Company, Golden, Colorado 80401 3395



BUS 406 / 683-4452  
RES 406 / 683-5023

## JOHNSON SADDLERY

JOHN SEYMOUR

SADDLE MAKER

CHAPS TACK  
125 W. BANNACK

CUSTOM SADDLE

SADDLE REPAIR  
DILLON, MONTANA 59725

JR. EVENTS SPONSOR

## JACOBS LIVESTOCK RODEO COMPANY

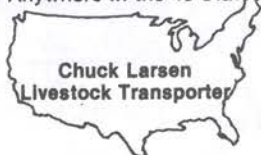


Saddle Bronc Riding Sponsor

P. O. BOX 2132

GREAT FALLS, MONTANA

Anywhere in the 48 States



(406) 248-7652

P.O. Box 30474  
Billings, MT 59107

## BUSY BEE FAMILY DINING

COMPLETE MENU

FEATURING OUR FAMOUS

★ SALAD BAR ★ HOMEMADE ROLLS & PIES

★ BEER & WINE

Open 24 Hours/Meeting & Banquet Rooms Available  
FIRESIDE — HONEYCOMB — COMBO

1985 BAREBACK RIDING SPONSOR

Mark & Mary Ann Roundup, Montana  
Petrie 406-323-2204

Support the Beef Industry — Buy Beef!

## MILES CITY DAIRY QUEEN VALLEY DRIVE EAST

- BEST BURGERS AROUND —
- DELICIOUS SANDWICHES —
- FANTASTIC DAIRY QUEEN TREATS —

*Good Luck, Rodeo Contestants!*

We Use Only Local Beef — We Treat You Right!

THE FLEMING FAMILY, OWNERS



# NRA AWARDS DONORS

## PAYS STEAK HOUSE

BILLINGS

John and Lauretta Aalgaard

LOCATED IN PUBLIC AUCTION YARDS

**BUCKLE DONOR**



SHARON & CLINT MARTIN

Box 4258, Gilt Edge Route  
Lewistown, Montana 59457  
Phone 406-428-2398 or 428-2205

**S&T Trucking**  
INC.



**BUCKLE DONOR**

LARRY LITTRELL  
President

Drawer 150  
Pompeys Pillar, MT 59064

Office (406) 875-2600  
Home (406) 875-2573

**FOR RENT**



137 E. MAIN • P.O. BOX 1171  
BOZEMAN, MT. 59715

**PIERCE FLOORING**

3007 MONTANA AVE. - P.O. BOX 30776  
BILLINGS, MONTANA 59107  
PHONE 406-252-4666

**TEAM ROPING DONOR**

**SILVER & WORKS**

SILVERSMITHING  
ENGRAVING

CINDE BARTHELMESS

P.O. Box 282 - Lincoln, Mt. 59639  
Phone 406-362-4664

Saddle Sponsor  
Stock of the Year Donor



**AgriBasics**

a ConAgra Company

**For the finest in feed.**

# NRA AWARDS DONORS

## — DONORS —

IF YOUR BUSINESS HAS CONTRIBUTED TO THE SUCCESS OF THE NRA, AND YOUR AD DOES NOT APPEAR ON THESE PAGES, SEND US YOUR BUSINESS CARD OR OTHER AD COPY, AND WE WILL PLACE YOUR AD.



CRAFTSMEN OF CUSTOM  
& TROPHY BUCKLES,  
SPURS & FINE WESTERN  
JEWELRY

**Jerry Valdez and Tracy Mikes**  
— Proprietors —

C.E. Mitchell Building  
308 - 4th Ave. So.

Great Falls, Mt. 59405  
Office 406-454-1211

## ► BROKEN ◀ ARROW SADDLERY

GREAT FALLS, MONTANA  
PHONE 454-1821

Saddle Bronc Riding Sponsor

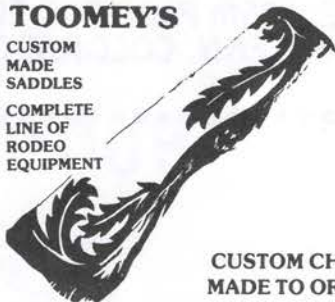
## TOOMEY'S

CUSTOM  
MADE  
SADDLES

COMPLETE  
LINE OF  
RODEO  
EQUIPMENT

SHOE AND  
BOOT  
REPAIR

SADDLE AND  
EQUIPMENT  
REPAIRED



CUSTOM CHAPS  
MADE TO ORDER

LEWISTOWN, MONTANA

HOME OF PANDEMAR AQHA  
SIRE OF TOP PERFORMANCE HORSES  
*Dealer for Vita Stress Vitamins*



## JOHN & LOIS HILL

BOX 108 — GEYSER, MONT. 59447  
PHONE 406-735-4484

*A Lextron Company*

## PARKER LIVESTOCK SUPPLY, INC.

Marlin R. McCaffree  
District Manager

1380 MINNESOTA

P.O. BOX 2116

BILLINGS, MONTANA 59103

PHONE (406) 259-4561

FOR RENT

## NORTHERN RODEO CO.

OUTLOOK, MONT.  
59252



Larry Wirtz

895-2236



**SKIP MURPHY • DAUGHTERS & SON**

**PHONE: (303) 452-4252**

# **RODEO PHOTOGRAPHY**

*Official Photographer  
For the NRA Finals*

**735 E. 105th Place-Apt. 207-C  
NORTHGLENN, COLORADO 80233**



# **RIDE FOR THE DIAMONDS RODEOS ENNIS, HARLOWTON, & ROUNDUP**

**BLACK HILLS GOLD RING WILL BE AWARDED TO THE ROUGH  
STOCK EVENTS COWBOY WHO ENTERS & COMPETES AT THE  
THREE PARTICIPATING RODEOS, AND WINS THE MOST MONEY.**

**POINTS WILL BE DETERMINED BY MONEY WON, AND THE AWARD  
WILL BE PRESENTED AT THE NRA AWARDS BANQUET.**

**LAST YEAR'S WINNER - SCOTT TOMLIN**



**THIS IS  
NO BULL!**

**THIS IS YOUR  
LAST  
NEWSLETTER  
ON YOUR 1987 DUES!**

***NO DUES – NO NEWS!  
PAY UP!***

**MAIL DUES TO:  
NORTHERN RODEO ASSOCIATION  
P.O. BOX 1122  
BILLINGS, MONTANA 59103**

**BULK RATE**  
U.S. Postage  
**PAID**  
Choteau, Mont.  
Permit No. 13



**NORTHERN RODEO ASSOCIATION**  
BOX 1122  
BILLINGS, MONT. 59103

© 1985 Adolph Coors Company, Golden, Colorado 80401 3395



**TEAM**  
**UP** With Coors  
& Coors Light